

# 1-BEDROOM

## Type A1

38 sq m | 409 sq ft  
 INCLUSIVE OF 3 SQM AC LEDGE

Tower 16  
 UNIT  
 #03-01 TO #29-01

Tower 18  
 UNIT  
 #03-11 TO #29-11  
 #03-13 TO #29-13

## Type A1-R

38 sq m | 409 sq ft  
 INCLUSIVE OF 3 SQM AC LEDGE

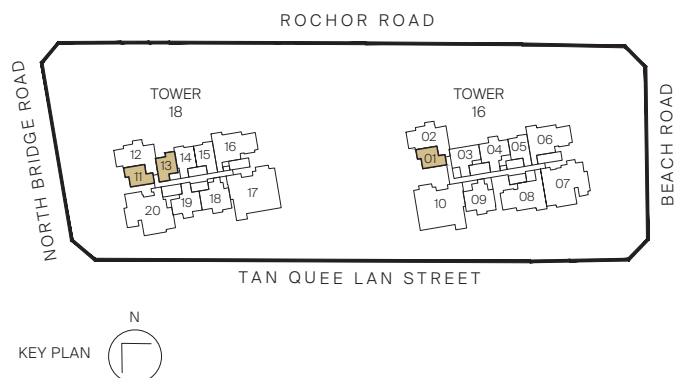
Tower 16  
 UNIT  
 #30-01

Tower 18  
 UNIT  
 #30-11  
 #30-13



### Legend (where applicable)

- |                               |                                |
|-------------------------------|--------------------------------|
| <b>F</b> - Fridge             | <b>WCH</b> - Wine Chiller      |
| <b>IH</b> - Induction Hob     | <b>W</b> - Washer              |
| <b>GH</b> - Gas Hob           | <b>D</b> - Dryer               |
| <b>WM</b> - Washer cum Dryer  | <b>DB</b> - Distribution Board |
| <b>SO</b> - Combi Steam Oven  | <b>SC</b> - Shoe Cabinet       |
| <b>CO</b> - Convectional Oven |                                |



# 2-BEDROOM

## Type B3

67 sq m | 721 sq ft

INCLUSIVE OF 5 SQM BALCONY & 3 SQM AC LEDGE

Tower 16

UNIT

#04-09 to #29-09

Tower 18

UNIT

#04-18 to #29-18

## Type B3-R

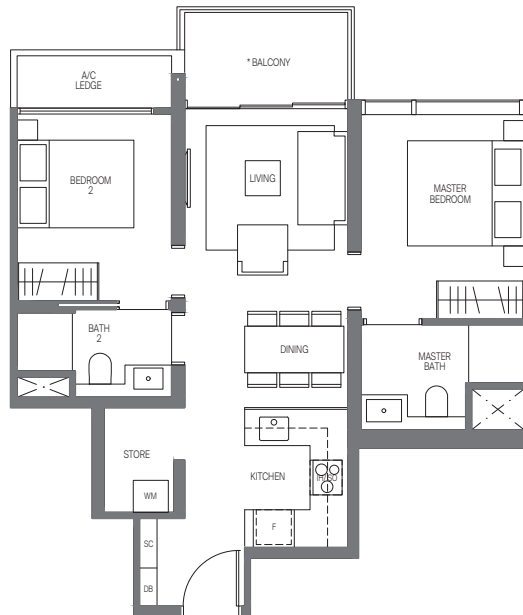
67 sq m | 721 sq ft

INCLUSIVE OF 5 SQM BALCONY & 3 SQM AC LEDGE

Tower 16

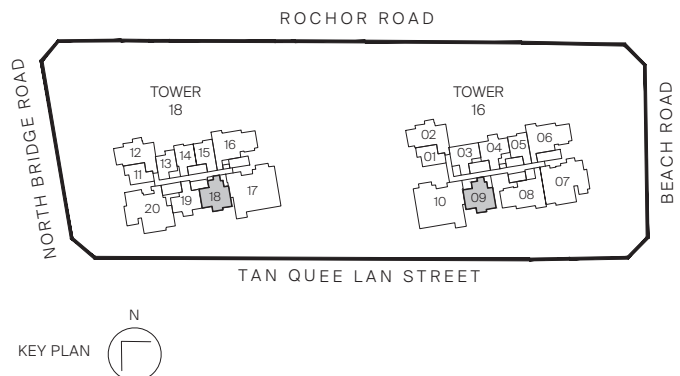
UNIT

#30-09



### Legend (where applicable)

- |                               |                                |
|-------------------------------|--------------------------------|
| <b>F</b> - Fridge             | <b>WCH</b> - Wine Chiller      |
| <b>IH</b> - Induction Hob     | <b>W</b> - Washer              |
| <b>GH</b> - Gas Hob           | <b>D</b> - Dryer               |
| <b>WM</b> - Washer cum Dryer  | <b>DB</b> - Distribution Board |
| <b>SO</b> - Combi Steam Oven  | <b>SC</b> - Shoe Cabinet       |
| <b>CO</b> - Convectional Oven |                                |



All plans are subjected to amendments as may be approved by the relevant authorities. Floor areas are approximate measurements and are subjected to final survey.

\* Balconies/PES are not to be enclosed except with a balcony screen which has been approved and complies with the Competent Authority's guidelines. For an illustration of the approved balcony screen, please refer to this brochure

# 3-BEDROOM

## Type C2

99 sq m | 1066 sq ft

INCLUSIVE OF 6 SQM BALCONY & 5 SQM AC LEDGE

Tower 16

UNIT

#04-06 to #29-06

Tower 18

UNIT

#04-16 to #29-16

## Type C2-R

99 sq m | 1066 sq ft

INCLUSIVE OF 6 SQM BALCONY & 5 SQM AC LEDGE

Tower 16

UNIT

#30-06

Tower 18

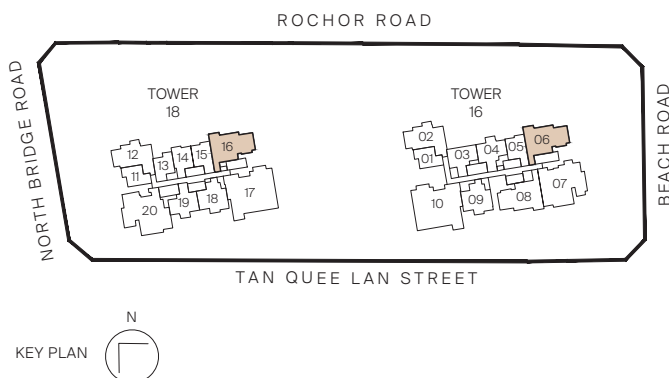
UNIT

#30-16



Legend (where applicable)

- |                               |                                |
|-------------------------------|--------------------------------|
| <b>F</b> - Fridge             | <b>WCH</b> - Wine Chiller      |
| <b>IH</b> - Induction Hob     | <b>W</b> - Washer              |
| <b>GH</b> - Gas Hob           | <b>D</b> - Dryer               |
| <b>WM</b> - Washer cum Dryer  | <b>DB</b> - Distribution Board |
| <b>SO</b> - Combi Steam Oven  | <b>SC</b> - Shoe Cabinet       |
| <b>CO</b> - Convectional Oven |                                |



All plans are subjected to amendments as may be approved by the relevant authorities. Floor areas are approximate measurements and are subjected to final survey.

\* Balconies/PES are not to be enclosed except with a balcony screen which has been approved and complies with the Competent Authority's guidelines. For an illustration of the approved balcony screen, please refer to this brochure

# 4-BEDROOM PREMIUM

## Type D3P (PL)

168 sq m | 1808 sq ft

INCLUSIVE OF 16 SQM BALCONY & 8 SQM AC LEDGE

Tower 16

UNIT

#04-10\* to #29-10\*

Tower 18

UNIT

#04-17 to #29-17

## Type D3P-R (PL)

168 sq m | 1808 sq ft

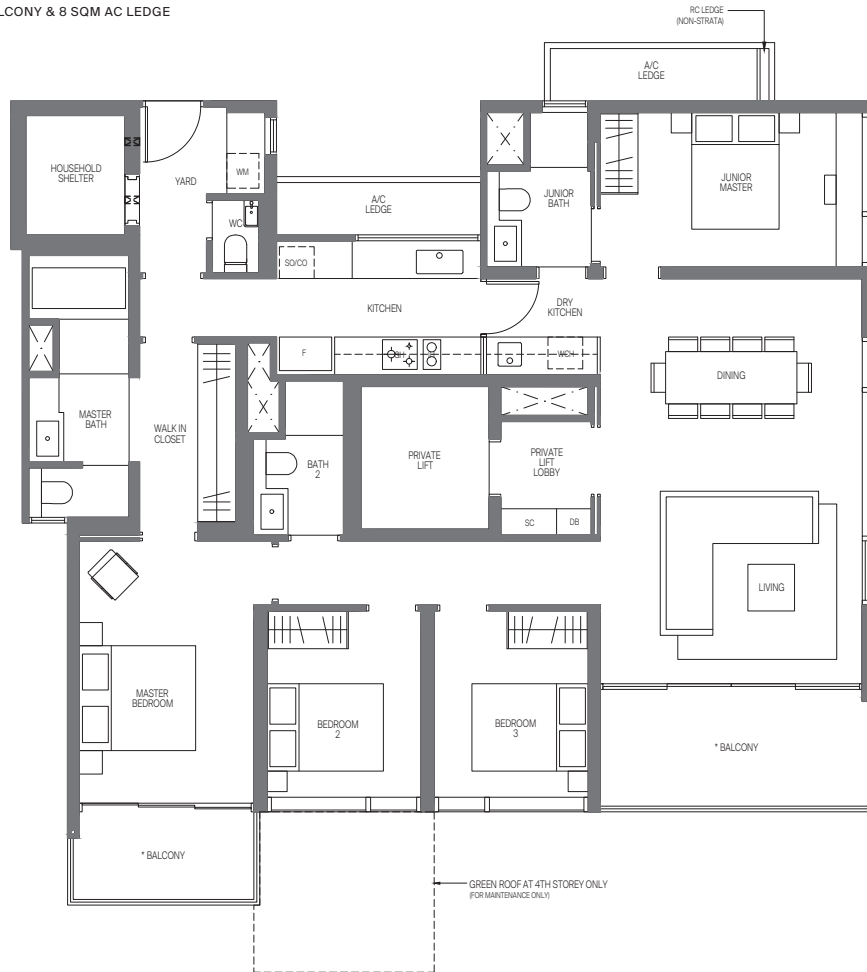
INCLUSIVE OF 16 SQM BALCONY & 8 SQM AC LEDGE

Tower 16

UNIT

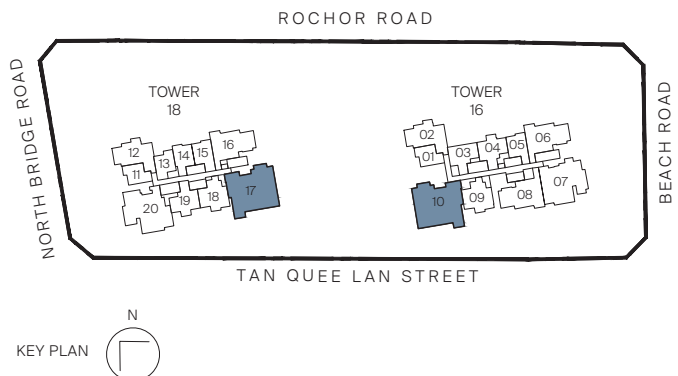
#30-10\*

\* MIRROR IMAGE



Legend (where applicable)

- |                        |                         |
|------------------------|-------------------------|
| F - Fridge             | WCH - Wine Chiller      |
| IH - Induction Hob     | W - Washer              |
| GH - Gas Hob           | D - Dryer               |
| WM - Washer cum Dryer  | DB - Distribution Board |
| SO - Steam Oven        | SC - Shoe Cabinet       |
| CO - Convectional Oven |                         |



All plans are subjected to amendments as may be approved by the relevant authorities. Floor areas are approximate measurements and are subjected to final survey.

\* Balconies/PES are not to be enclosed except with a balcony screen which has been approved and complies with the Competent Authority's guidelines. For an illustration of the approved balcony screen, please refer to this brochure